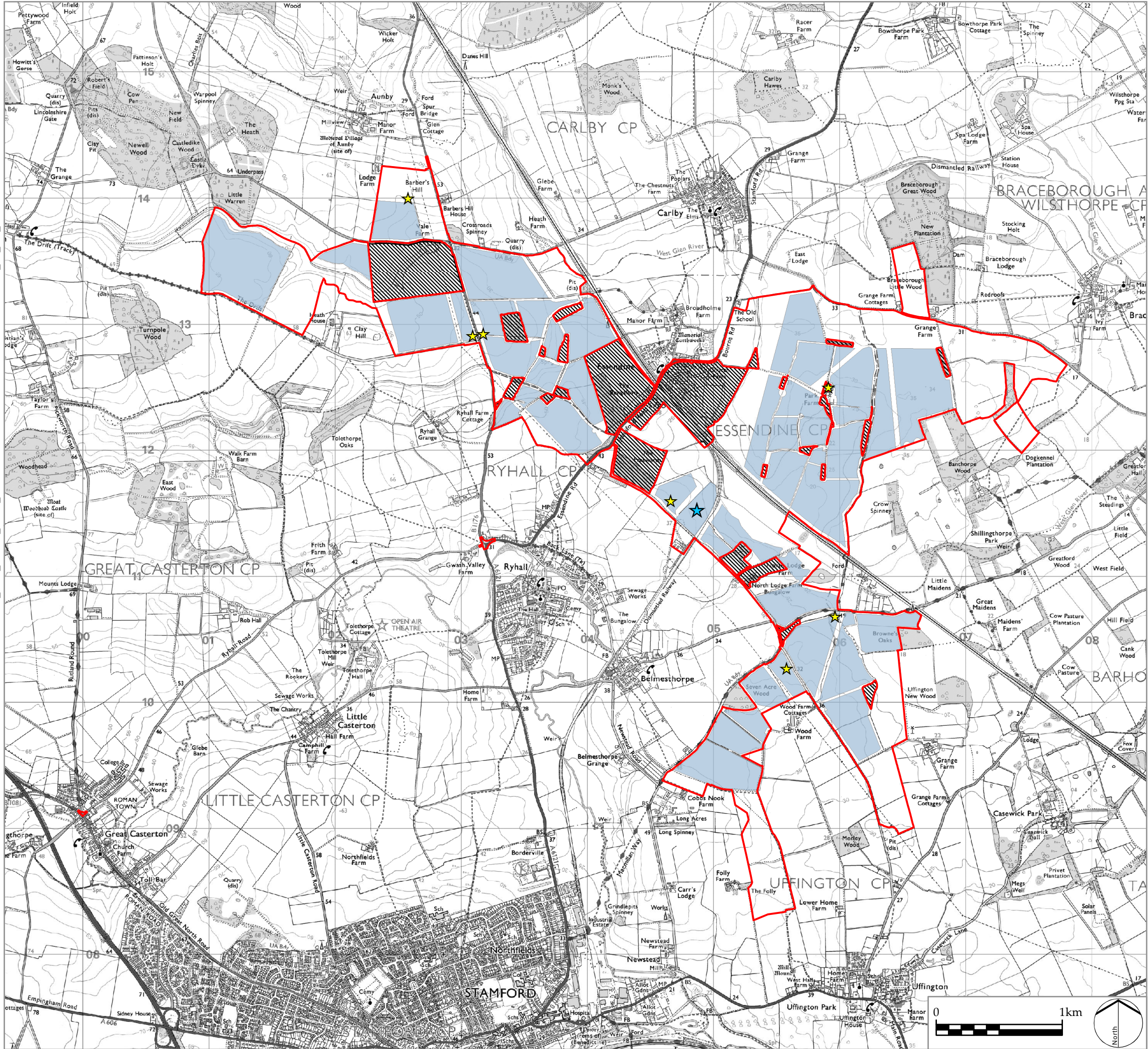


Z:\7863 NSIP SOLAR_FARM_CONFIDENTIAL\GIS\PROJECTS\FIGURES\7863_SK_619_TEMPORARY CONSTRUCTION COMPOUNDS.MXD



Infrastructure Planning (Applications:
Prescribed Forms and Procedure) Regulations 2009
APFP Regulation: 5(2)(a)

PINS REFERENCE NUMBER
EN010127

LEGEND

- Order limits
- Solar PV Site
- Areas outside the Order limits
- Primary Construction Compound
- Secondary Construction Compounds

P0 DCO Submission
REV. DESCRIPTION

RP 06/11/22
APP. DATE



PROJECT TITLE

MALLARD PASS SOLAR FARM

DRAWING TITLE

Figure 5.12: Locations of Primary and
Secondary Temporary Construction Compounds

ISSUED BY Oxford T: 01865 887050
DATE Nov 2022 DRAWN AG
SCALE @A3 1:30,000 CHECKED PD
STATUS Final APPROVED RP

DWG. NO. 7863_SK_619 REV: P0

No dimensions are to be scaled from this drawing.
All dimensions are to be checked on site.
Area measurements for indicative purposes only.

© LDA Design Consulting Ltd. Quality Assured to BS EN ISO 9001 : 2015

Sources: Ordnance Survey